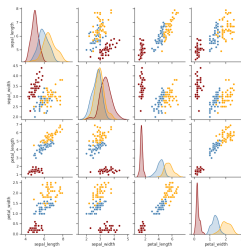


Model-based individualized healthcare



In the project you will

- ▶ Learn how dynamic models are used in pharmacology
- ▶ Improve your programming skills
- ▶ Use probabilistic uncertainty descriptions
- ▶ Work with researchers who have an extensive background in the field, including clinical work.
- ▶ Contribute with entirely new knowledge that will be useful when developing future drug dosing systems.

If this sounds interesting, contact Ylva Wahlquist (ylva.wahlquist@control.lth.se).